

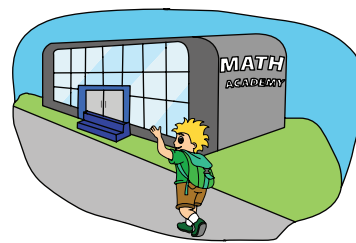


## Unit 6 - Help My Mom

do homework



practice the piano



go to an academy



play soccer



eat dinner



help my mom



Choose  
and Describe

Conductor chooses an item and picks different students to speak.

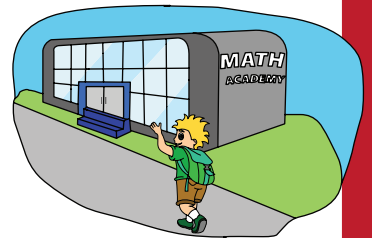


## What do you have to do?

I have to \_\_\_\_\_.



I have to \_\_\_\_\_.



I have to \_\_\_\_\_.



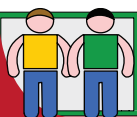
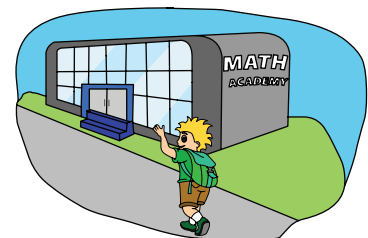
I have to \_\_\_\_\_.



## Key Expressions

A: What do you have to do?

B: I have to go to an academy.



**Pair  
Q and A**

Make student partner pairs to exchange a Q & A set. 1st student gives the prompt. 2nd student gives the response. Go to next partner pair



# Help My Mom

## Repetition and Recognition



### TEACHER DIRECTED

Teacher leads the class and students follow.

### TEACHER SUPPORTED

Students conduct with close teacher support and supervision.

### STUDENT DIRECTED

Students lead the classroom activities and manage classroom performance. Teacher evaluates.

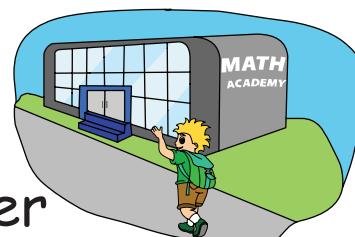
## A: Practice



help my mom



eat dinner



go to an academy

practice the piano



do homework

play soccer

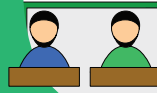
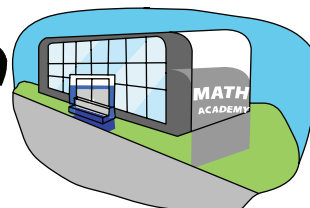


## B: Complete the sentences

1. Meg has to \_\_\_\_\_.



2. Rosa has to \_\_\_\_\_.



### Simple Pair-Work

Students work in pairs to complete the worksheet.



### TEACHER DIRECTED

Teacher leads the class and students follow.

### TEACHER SUPPORTED

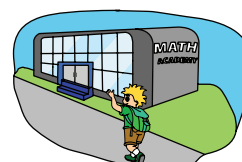
Students conduct with close teacher support and supervision.

### STUDENT DIRECTED

Students lead the classroom activities and manage classroom performance. Teacher evaluates.

A: Read and number  
What do you have to do?

1. I have to go to the academy.
2. I have to help my mom.
3. I have to do homework.
4. I have to practice the piano.
5. I have to eat dinner.
6. I have to play soccer.

☐☐☐☐☐☐

B: Read and check



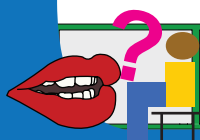
What do you have to do?

☐

I have to do piano.

☐

I have to practice the piano.



Interview

Students interview each other in front of the class.

**TEACHER DIRECTED**

Teacher leads the class and students follow.

**TEACHER SUPPORTED**

Students conduct with close teacher support and supervision.

**STUDENT DIRECTED**

Students lead the classroom activities and manage classroom performance. Teacher evaluates.

Read the short story and answer the questions:

It is four o'clock and time for Manu to go back home. "It's time for me to go home, Sten." says Manu.

"Oh, why? What do you have to do?" asks Sten.

"I have to help my mom and then eat dinner." Manu says. "Don't you have to do anything?" he asks Sten.



"Oh, that's right!" Sten says. "I have to practice piano and then I have to do my homework."

What does Sten have to do?

What does Manu have to do?

What do you have to do?



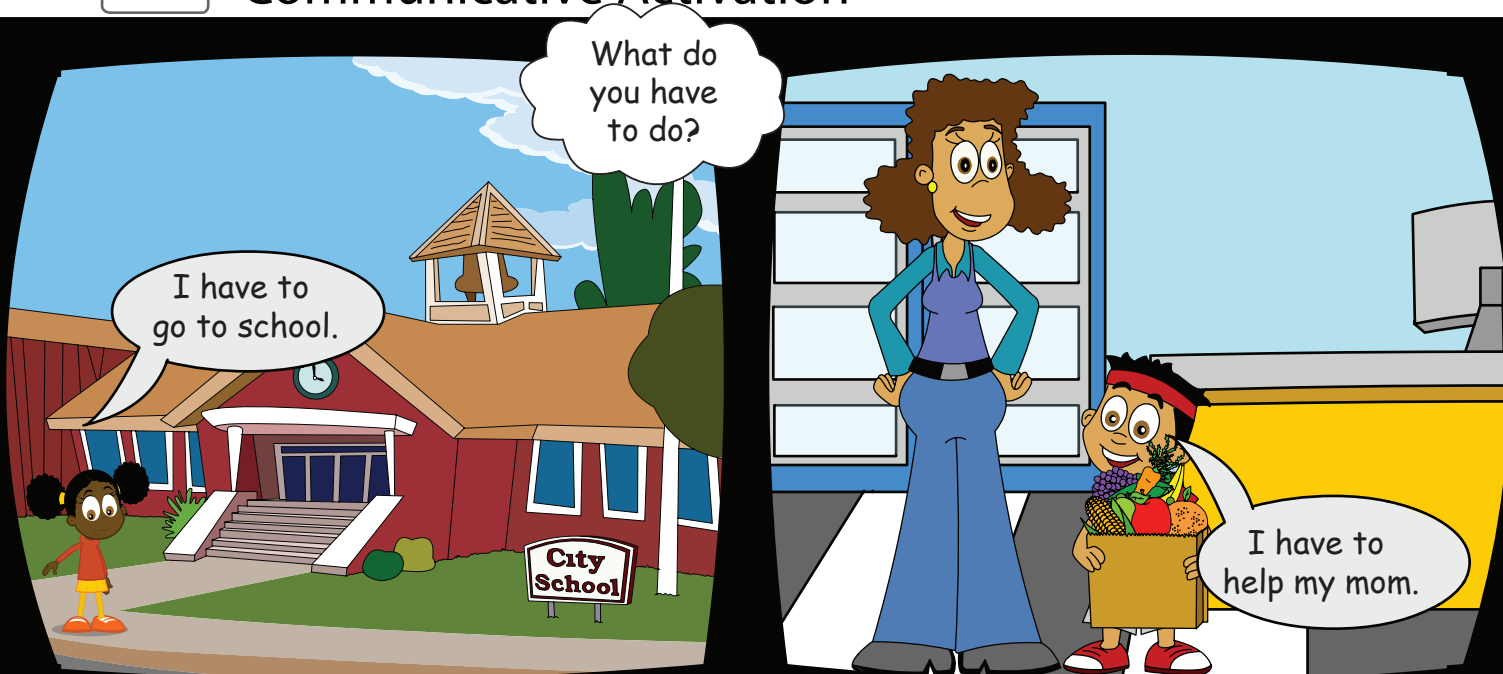
Town Hall  
Meeting

Call on volunteers or assign students to read and answer.



# Help My Mom

## Communicative Activation



A: What you have to do?

B: I have to clean my room.

A: What does your room look like?

B: It's very messy.