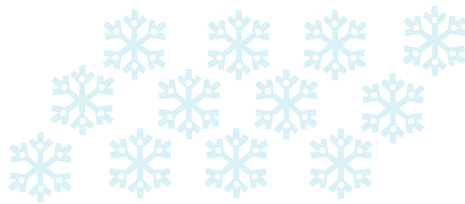


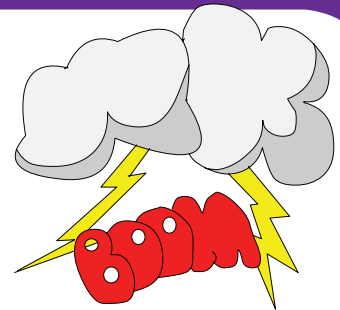
Unit 4 - Snowy Blizzard



lightning



frost



thunder



hail



blizzard



fog



Choose
and Describe

Conductor chooses an item and picks different students to speak.



What's your favorite weather?
I like **snowy blizzards**.

What's your favorite weather?
I like **fog**.

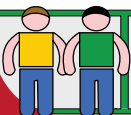
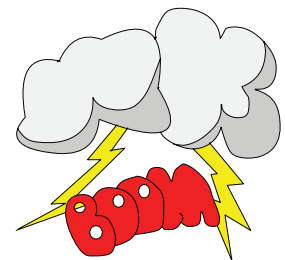
What's your favorite weather?
I like **hail**.



Key Expressions

A: What's your favorite weather?

B: I like **thunder and lightning**.



Pair
Q and A

Make student partner pairs to exchange a Q & A set. 1st student gives the prompt. 2nd student gives the response. Go to next partner pair



TEACHER DIRECTED
Teacher leads the class and students follow.

TEACHER SUPPORTED
Students conduct with close teacher support and supervision.

STUDENT DIRECTED
Students lead the classroom activities and manage classroom performance. Teacher evaluates.

A: Match

What's your favorite weather?
I like thunder.

What's your favorite weather?
I like lightning.

What's your favorite weather?
I like frost.

What's your favorite weather?
I like fog.



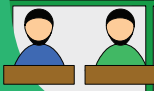
B: Complete

What's _____?

I like _____.

_____ weather?

_____.



**Simple
Pair-Work**

Students work in pairs to complete the worksheet.



TEACHER DIRECTED
Teacher leads the class and students follow.

TEACHER SUPPORTED
Students conduct with close teacher support and supervision.

STUDENT DIRECTED
Students lead the classroom activities and manage classroom performance. Teacher evaluates.

A: Number the person. Draw a line to the action.

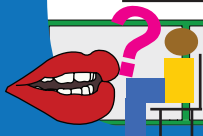
1. Sten's favorite weather makes it hard to see.
2. Manu's favorite weather is loud and dark.
3. Stig's favorite weather is cold, hard and icy.
4. Rosa's favorite weather has bright lights.

<input type="checkbox"/>		
<input type="checkbox"/>		
<input type="checkbox"/>		
<input type="checkbox"/>		

A line is drawn from the blonde boy's box to the boy with the flashlight.

B: Write out the sentences from section A

1. Sten likes fog.
2. _____
3. _____
4. _____



Interview

Students interview each other in front of the class.



TEACHER DIRECTED

Teacher leads the class and students follow.

TEACHER SUPPORTED

Students conduct with close teacher support and supervision.

STUDENT DIRECTED

Students lead the classroom activities and manage classroom performance. Teacher evaluates.

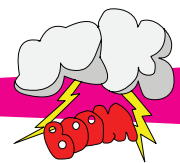
Read the short story and answer the questions:

Stig and Manu are bored. "I hope it will stop raining. I don't like the rain." says Manu.

"What is your favorite kind of weather?" Stig asks.

"I like snow and blizzards" Manu says. "What about you?" he asks Stig.

"I really like lightning and thunder." says Stig. The boys look out the window waiting for the rain to stop.



What is Stig's favorite kind of weather?

What is Manu's favorite kind of weather?

What is your favorite kind of weather?



Town Hall Meeting

Call on volunteers or assign students to read and answer.

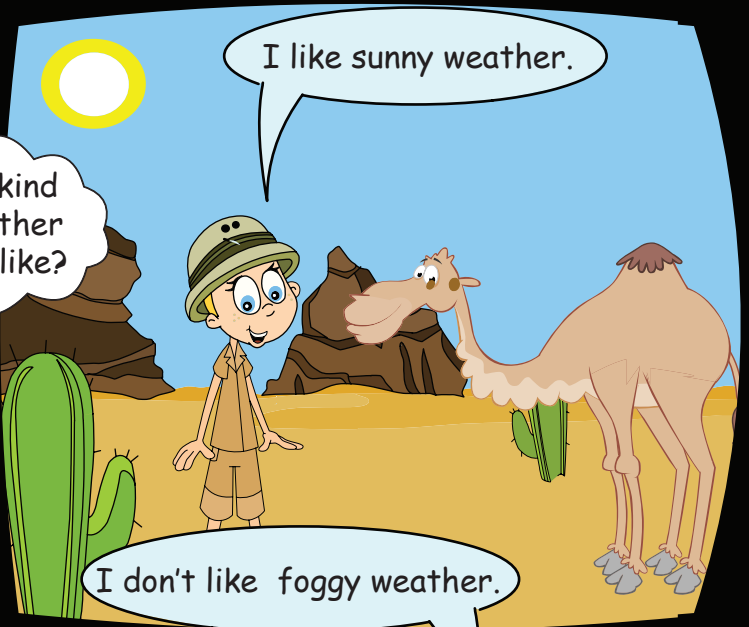


Snowy Blizzard

Communicative Activation



What kind of weather do you like?



I don't like foggy weather.



A: What's your favorite weather?

B: I like thunder and lightning.

B: What kind of weather do you like?

A: I like hot and sunny weather.

