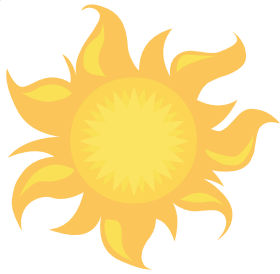




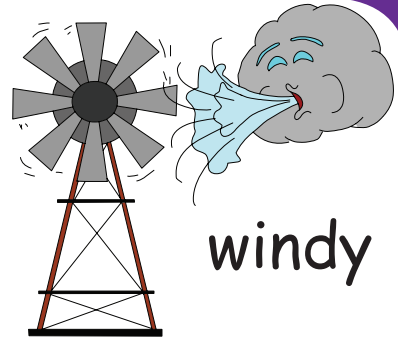
# Unit 3 - Sunny and Hot



sunny



rainy



windy



snowy



hot

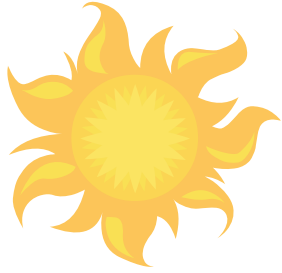


cold



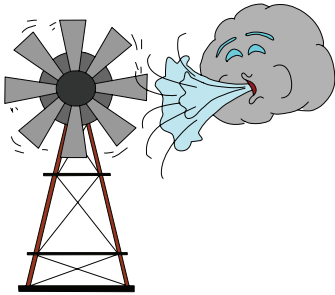
Chain

Conductor shows a picture to student 1. Student 1 answers and shows the next picture to student 2. Student 2 answers and shows the next picture to student 3. Go around the class.



It's **sunny** outside.

---



It's **windy** outside.

---



It's **snowy** outside.

---



It's **rainy** outside.

---



It's **hot** outside.

---



It's **cold** outside.

---

## Key Expressions

---

A: What's the weather like?

B: It's **rainy** outside.



**Race** Students race to see who can finish the task correctly the fastest. First to finish wins.



**TEACHER DIRECTED**  
Teacher leads the class and students follow.

**TEACHER SUPPORTED**  
Students conduct with close teacher support and supervision.

**STUDENT DIRECTED**  
Students lead the classroom activities and manage classroom performance. Teacher evaluates.

### A: Practice

What's the weather like?

It's snowy outside.

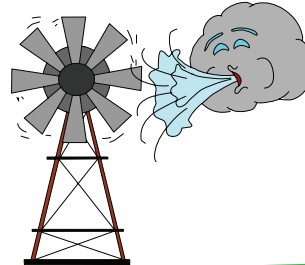
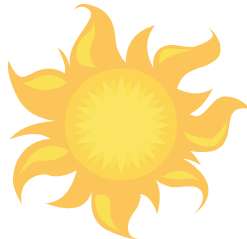


1.

2.

3.

4.



### B: Unscramble

the like What weather ? is

It rainy is . outside



**Draw And Show**

Students draw an item from the lesson and present their drawings to the class.



**TEACHER DIRECTED**

Teacher leads the class and students follow.

**TEACHER SUPPORTED**

Students conduct with close teacher support and supervision.

**STUDENT DIRECTED**

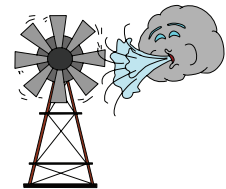
Students lead the classroom activities and manage classroom performance. Teacher evaluates.

**A: Fill in the blanks**

1. What's the weather \_\_\_\_\_?  
It's \_\_\_\_\_ outside.



2. \_\_\_\_\_ the \_\_\_\_\_ like?  
\_\_\_\_\_ windy \_\_\_\_\_.



3. What's the \_\_\_\_\_?  
\_\_\_\_\_.



4. \_\_\_\_\_?  
\_\_\_\_\_.



**B: Read and check**



What's the weather like?

It's rainy outside.

It's snowy outside.



It's windy outside.

It's cold outside.



Town Hall Meeting

Call on volunteers or assign students to read and answer.



**TEACHER DIRECTED**

Teacher leads the class and students follow.

**TEACHER SUPPORTED**

Students conduct with close teacher support and supervision.

**STUDENT DIRECTED**

Students lead the classroom activities and manage classroom performance. Teacher evaluates.

Read the short story and answer the questions:

Sten and Manu are tired from playing outside. They go into the house to drink some water and eat a snack.

"What's the weather like?" asks Sten's mom.

"It is hot and cloudy." says Manu. Suddenly it starts to rain. "You can't go outside now." says Sten's mom.

"Why?" asks Sten. "There is rain outside." she says.



Why are Sten and Manu tired?

What's the weather like?

Why can't they go outside now?



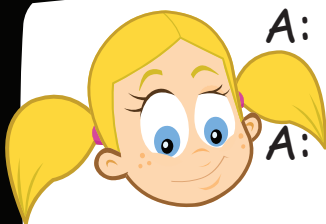
Read  
In - Turn

Students read each word, question, or sentence in turn.



# Sunny and Hot

## Communicative Activation



A: What's the weather like in summer?

B: It's rainy.

A: What's the weather like in winter.

B: It's snowy.

