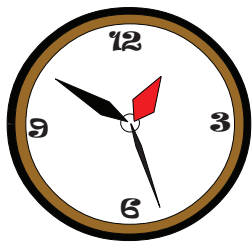
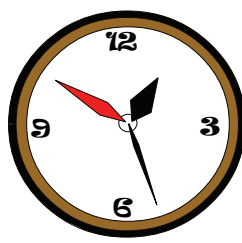




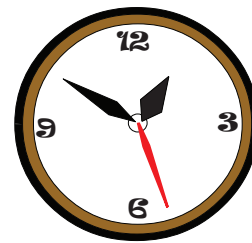
Unit 1 - It's on Two



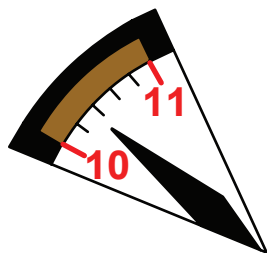
hour
hand



minute
hand



second
hand



hour



minutes



seconds



Chain

Conductor shows a picture to student 1. Student 1 answers and shows the next picture to student 2. Student 2 answers and shows the next picture to student 3. Go around the class.



Where is the **minute hand**?

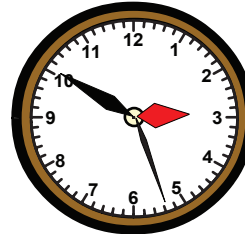
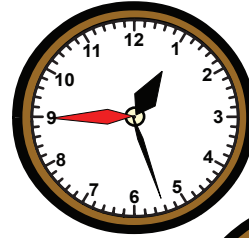
It's on the nine.

Where is the **second hand**?

Where is the **hour hand**?

Where is the **minute hand**?

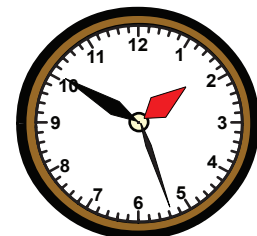
Where is the **second hand**?



Key Expressions

A: Where is the **hour hand**.

B: It's on **the two**.



Race Students race to see who can finish the task correctly the fastest. First to finish wins.



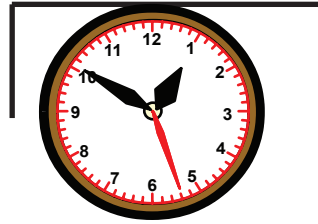
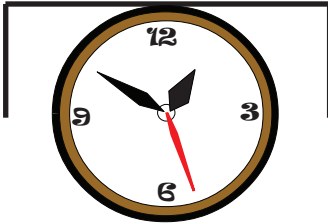
TEACHER DIRECTED
Teacher leads the class and students follow.

TEACHER SUPPORTED
Students conduct with close teacher support and supervision.

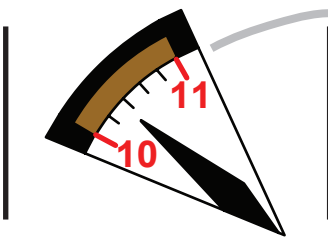
STUDENT DIRECTED
Students lead the classroom activities and manage classroom performance. Teacher evaluates.

A: Match

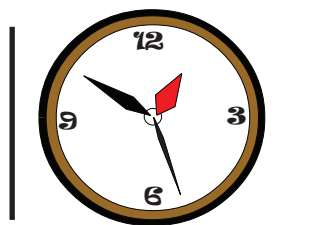
second



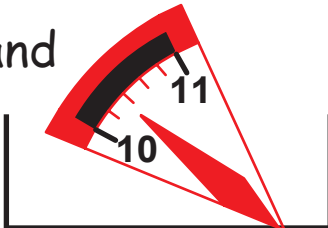
minute



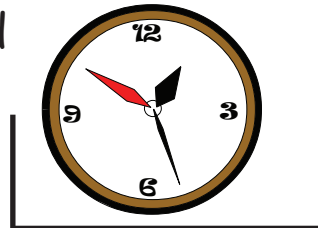
hour



second hand



hour hand



minute hand

B: Match



The hour hand is on the nine.

3



The second hand is on the three.

9



The minute hand is on the six.

6



Draw And Show

Students draw an item from the lesson and present their drawings to the class.



TEACHER DIRECTED
Teacher leads the class and students follow.

TEACHER SUPPORTED
Students conduct with close teacher support and supervision.

STUDENT DIRECTED
Students lead the classroom activities and manage classroom performance. Teacher evaluates.

A: Number the clock. Then write the time.

1. The hour hand is on the five and the minute hand is on the one.
2. The minute hand is on the eight and the second hand is on the twenty.
3. The second hand is on the seven and the hour hand is on the eleven.
4. The second hand is on the twelve, the minute hand is on the two.
5. The hour hand is on the six and the second hand is on the four.
6. The minute hand is on the three and the hour hand is on the ten.

1



It's five after five.













Town Hall Meeting

Call on volunteers or assign students to read and answer.



TEACHER'S
CHOICE

TEACHER DIRECTED

Teacher leads the class and students follow.

TEACHER SUPPORTED

Students conduct with close teacher support and supervision.

STUDENT DIRECTED

Students lead the classroom activities and manage classroom performance. Teacher evaluates.

Read the short story and answer the questions:

Manu is visiting his friend Sten's house. He knocks on the door. Sten's mom opens the door. "Is Sten here?" Manu asks.

"He is taking a nap. You can wake him up." Sten's mom says. Manu goes to Sten's room. "Hey! Wake up!" he says.

"Mmmph... What time is it?" Sten says sleepily.

"It's five after three" Manu says. "Wake up and let's go play outside!"



What time is it?

Where is the hour hand?

Where is the minute hand?



Read
In - Turn

Students read each word, question, or sentence in turn.



It's on Two

Communicative Activation



A: What time is it?

A: Where is the hour hand?

B: I don't know.

B: It's on eight.

