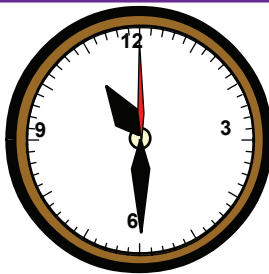
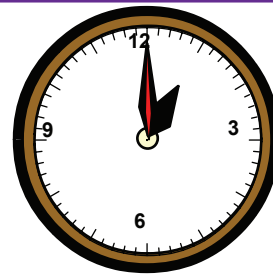


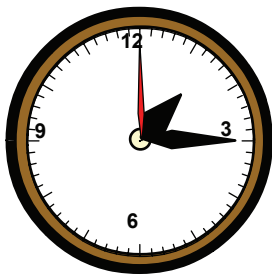
twelve noon



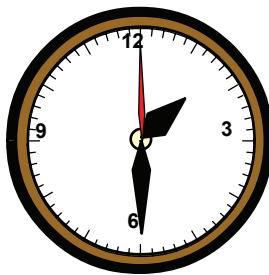
eleven thirty



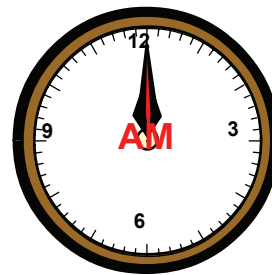
one o'clock



one fifteen



one thirty



midnight



Chain

Conductor shows a picture to student 1. Student 1 answers and shows the next picture to student 2. Student 2 answers and shows the next picture to student 3. Go around the class.



Twelve Noon

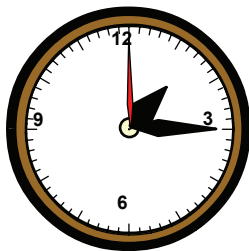
Vocab & Key Phrase Integration



It's midnight.

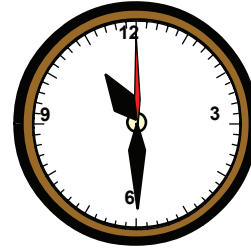


It's twelve noon.

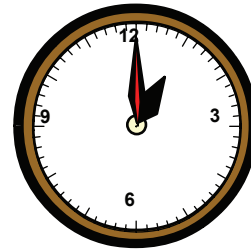


It's one fifteen.

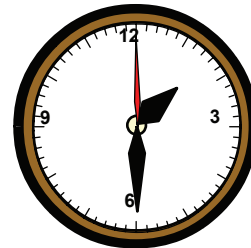
It's eleven thirty.



It's one o'clock.



It's one thirty.



Key Expressions

A: What time is it?

B: It's twelve noon.



Race Students race to see who can finish the task correctly the fastest. First to finish wins.



Twelve Noon

Repetition and Recognition



TEACHER DIRECTED

Teacher leads the class and students follow.

TEACHER SUPPORTED

Students conduct with close teacher support and supervision.

STUDENT DIRECTED

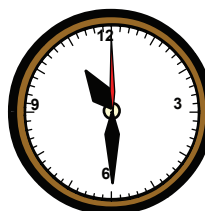
Students lead the classroom activities and manage classroom performance. Teacher evaluates.

A: What time is it?

one fifteen



one thirty

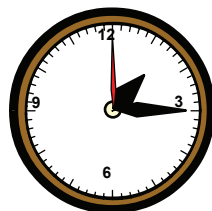


one o'clock

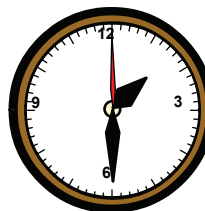


noon

midnight



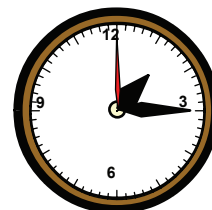
eleven thirty



B. Complete the sentences

1. _____.

2. _____.



Draw And Show

Students draw an item from the lesson and present their drawings to the class.



TEACHER DIRECTED

Teacher leads the class and students follow.

TEACHER SUPPORTED

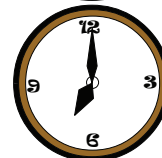
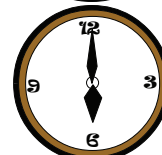
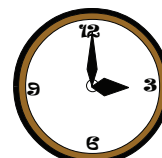
Students conduct with close teacher support and supervision.

STUDENT DIRECTED

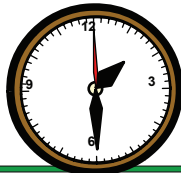
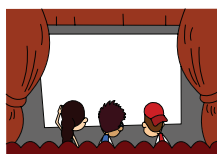
Students lead the classroom activities and manage classroom performance. Teacher evaluates.

A. Number the picture. Draw a line to connect the place with the time.

1. This place has many trees. We will go at 5 o'clock.
2. This place has many animals. We will go at 3 o'clock.
3. This place has a lot of fish. We will go at 7 o'clock.
4. This place has swings and slides. We will go at 6 o'clock.

☐☐☐☐

B: Read and Check
Where did you go?



☐ I went to the theater at one thirty.

☐ I went to the theater at two thirty.



Town Hall Meeting

Call on volunteers or assign students to read and answer.

**TEACHER DIRECTED**

Teacher leads the class and students follow.

TEACHER SUPPORTED

Students conduct with close teacher support and supervision.

STUDENT DIRECTED

Students lead the classroom activities and manage classroom performance. Teacher evaluates.

Read the short story and answer the questions:

Stig and Klara are tired from playing at the beach. "What time is it?" Klara asks Stig.

"It is eleven thirty." he says. They will take a bus at twelve noon. They pack up all their things and walk to the bus stop.

The bus takes one hour and thirty minutes. "What time is it?" Klara asks when they get home.

"Its one thirty." says Stig "Its time for lunch."



Where are Stig and Klara?

What time do they take the bus?

What time do they get home?



Read
In - Turn

Students read each word, question, or sentence in turn.



Twelve Noon

Communicative Activation



A: What time is it?

B: It is twelve noon.

A: Is it time for lunch?

B: No. Lunch is at twelve thirty.

