

Do you want to go to the moon?

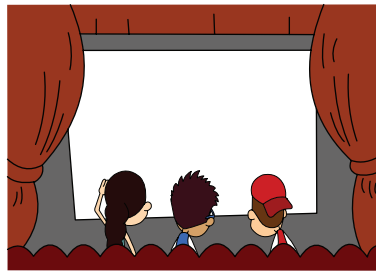
No. Let's go to the movies?

Unit 4 - Watch a Movie

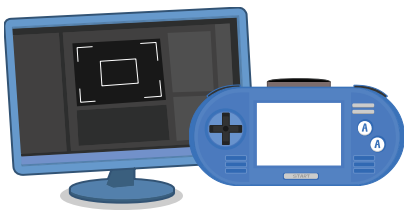
watch a movie



play basketball



go to the game room



play video games



go home



eat sushi



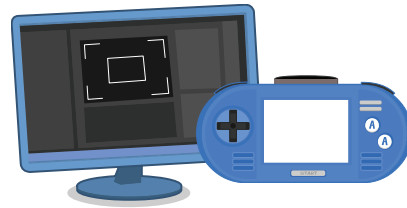
Choose and Describe

Conductor chooses an item and picks different students to speak.



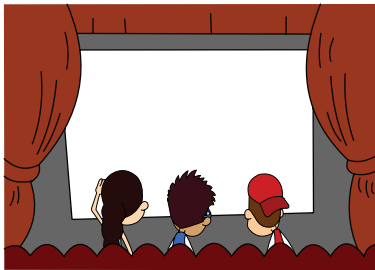
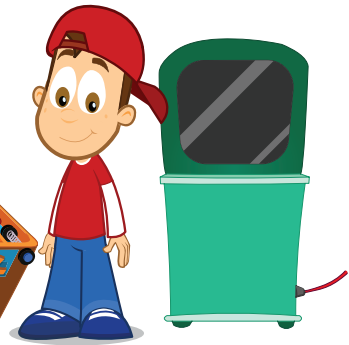
I went home.

I played video games.



I ate sushi.

I went to the game room.



I watched a movie.

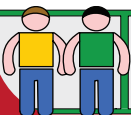
I played basketball.



Key Expressions

A: What did you do?

B: I ate sushi.



Pair
Q and A

Make student partner pairs to exchange a Q & A set. 1st student gives the prompt. 2nd student gives the response. Go to next partner pair



Watch a Movie

Repetition and Recognition



TEACHER'S CHOICE

TEACHER DIRECTED

Teacher leads the class and students follow.

TEACHER SUPPORTED

Students conduct with close teacher support and supervision.

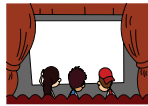
STUDENT DIRECTED

Students lead the classroom activities and manage classroom performance. Teacher evaluates.

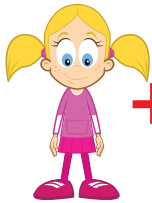
A: Write



+ watched +



= Manu watched a movie.



+ ate +



=



+ played +



=



+ went +

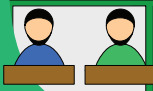


=

B: Unscramble

you do What ? did

went the I movies to



Simple
Pair-Work

Students work in pairs to complete the worksheet.



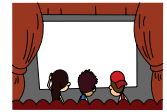
TEACHER DIRECTED
Teacher leads the class and students follow.

TEACHER SUPPORTED
Students conduct with close teacher support and supervision.

STUDENT DIRECTED
Students lead the classroom activities and manage classroom performance. Teacher evaluates.

A: Label the statement **true** or **false**.
Fix the mistakes.

1. He went to the theater. He watched a movie. **True / False**



2. She ate raw fish and rice. She ate sushi. **True / False**



3. He read a book. He went to the game room. **True / False**



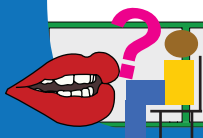
4. She went to the library. She played video games. **True / False**



5. School was finished. She went home. **True / False**



6. He was hungry. He played basketball. **True / False**



Interview

Students interview each other in front of the class.



TEACHER DIRECTED
Teacher leads the class and students follow.

TEACHER SUPPORTED
Students conduct with close teacher support and supervision.

STUDENT DIRECTED
Students lead the classroom activities and manage classroom performance. Teacher evaluates.

Read the short story and answer the questions:

"What did you do at the park?" Stig asks.

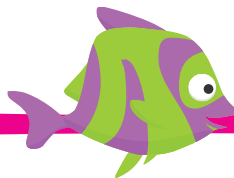
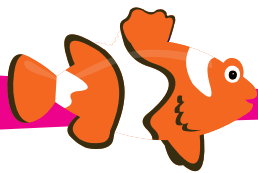
"We played basketball." says Klara.

"And what did you do at the zoo?" asks Stig.

"I looked at all of the animals." Klara says.

"And you? What did you do at the aquarium?" Klara asks Stig.

"I looked at all the sea animals." says Stig.



What did Klara do at the park?

What did Stig do at the aquarium?

What did Klara do at the zoo?



Town Hall Meeting

Call on volunteers or assign students to read and answer.



Watch a Movie

Communicative Activation



A: Where did you go?

B: I went to the library.

A: What did you do there?

B: I did my homework.

